

FM-180

300LBS ELECTRO-MAGNETIC LOCK



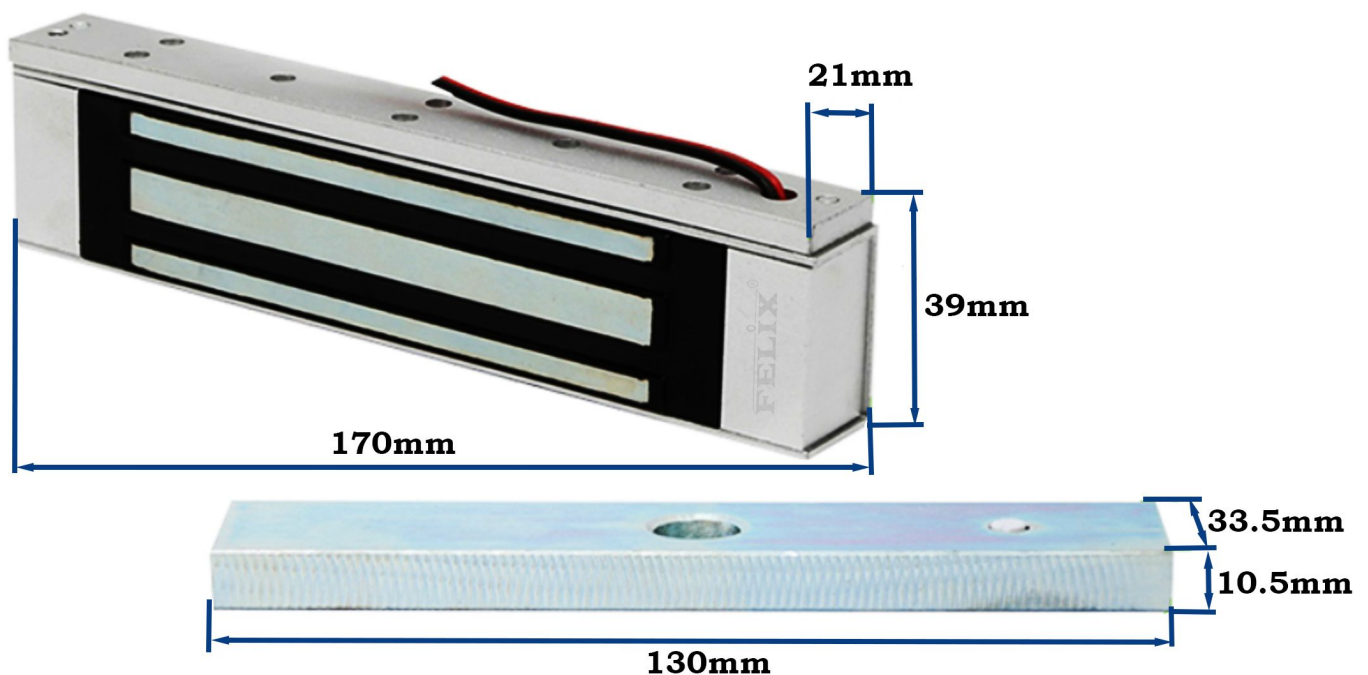
Product Features

- Low power consumption with high efficiency.
- Reliable holding force: 300lbs.
- High strength material, anodized aluminum housing.
- Special anti-residual magnetic design makes automatic access control safer and more convenient.
- Durable and silence operation.
- Suitable for small doors, file cabinet, display cabinet etc.

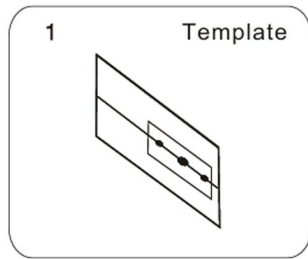
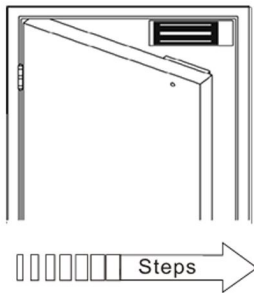
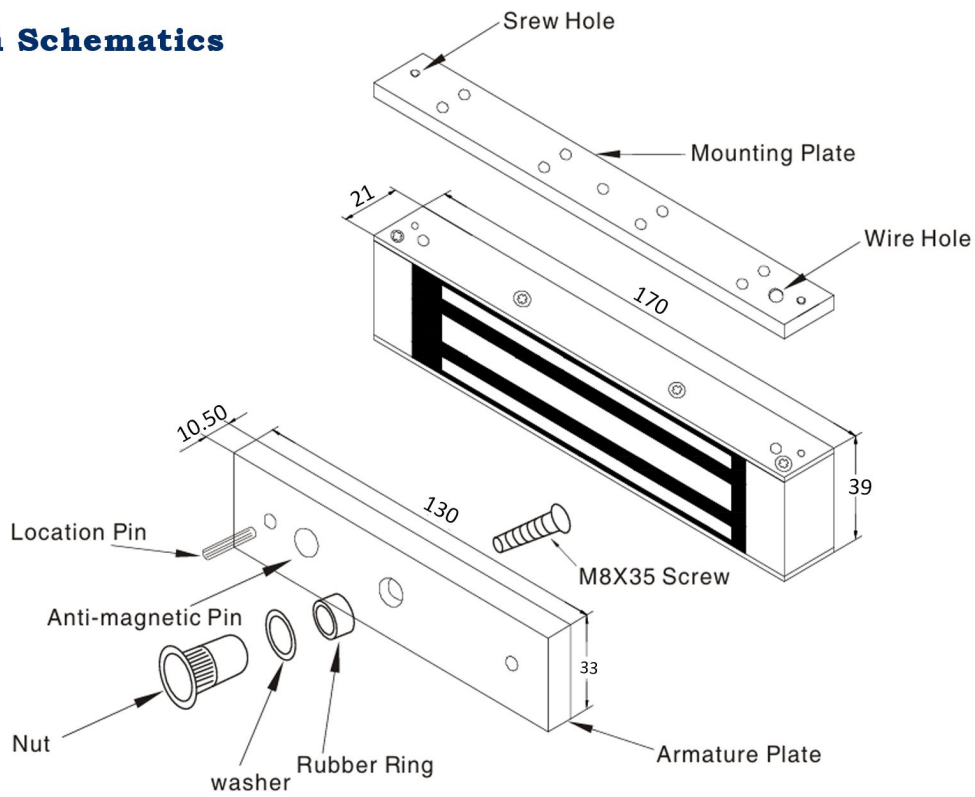
Technical Specifications

Model	FM-180
Holding Force	300lbs
Material	Finishes for shell: Anodized aluminum
	Finishes for magnet: Zinc
	Finishes for armature: Zinc
Feature	Fail-safe: Power to lock
Voltage	DC 12V
Current	12V/300mA
Door	Single door
Lock Size	170L x 39W x 21H (mm)
Armature Size	130L x 33.5W x 10.5H (mm)

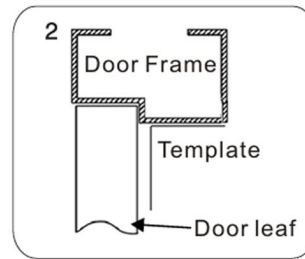
Installation



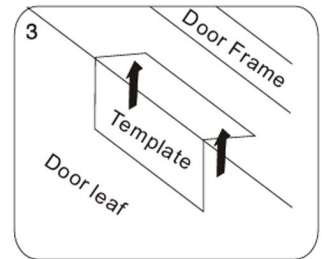
Installation Schematics



1 Template
Fold the plate to 90° .

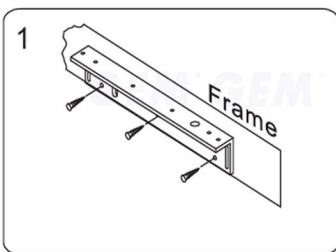


2 Door Frame
Template
Door leaf
Close the door first, then place the upper side of template on door frame, while adjust the left side next to the door leaf.

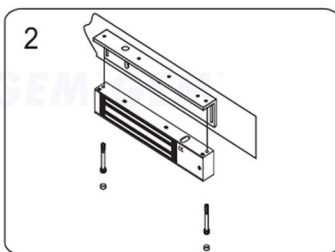


3 Door Frame
Template
Door leaf
Mark screw positions of armature plate and magnetic lock on door leaf and door frame respectively.

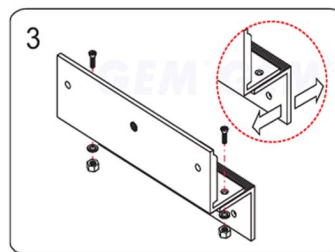
With LZ bracket for In-swinging doors



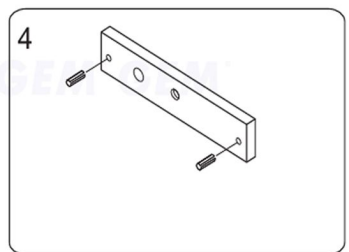
1 Find a mounting location on the door frame for the L bracket. Make sure that the door is still closeable.



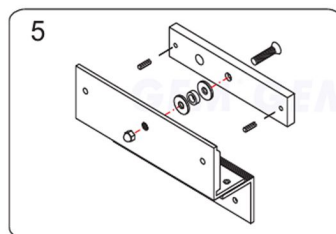
2 Tighten the electromagnetic lock on the L bracket by using the fixing screw.



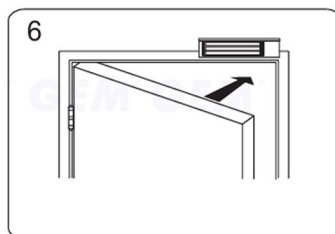
3 Assemble the Z bracket, and make sure that the Z bracket is adjustable.



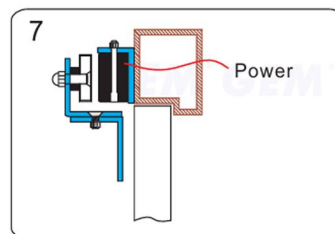
4 Insert the guide pins into the armature plate.



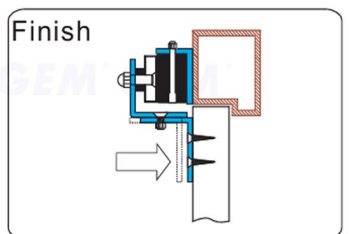
5 Put one rubber washer between armature plate and the Z bracket.



6 Close the door. Measure the correct position by bringing the armature plate close to the contact surface of the electromagnetic lock.



7 Turn on the power of EM-Lock, and let the armature plate bonds to the EM-lock. Adjust the position between the Z bracket and the door frame.



Finish
Once the position is correct, use the screws to permanently mount the Z bracket on the door frame. This should be the last step.